

# r-TE

Recombinant Trypsin/EDTA solution

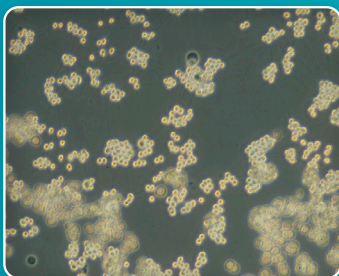
# s-TI

Synthetic Trypsin Inhibitor solution



## r-TE

- ❑ Free of animal components
- ❑ Cell dissociation of adherent cells
- ❑ High dissociation ability with good viability



## s-TI

- ❑ Use equal amounts of s-TI to neutralize r-TE
- ❑ Free of animal components

**r-TE** Recombinant Trypsin/EDTA solution  
**s-TI** Synthetic Trypsin Inhibitor solution

"r-TE" is ready to use recombinant Trypsin / EDTA solution. It can quickly dissociate cells. Use "s-TI", synthetic trypsin inhibitor to neutralize the reaction.

## r-TE

- Ready to use recombinant Trypsin/EDTA solution. Free of animal components.
- Optimal for dissociation of adherent cells.
- As efficient as animal origin trypsin.
- Validated by cell detachment tests.

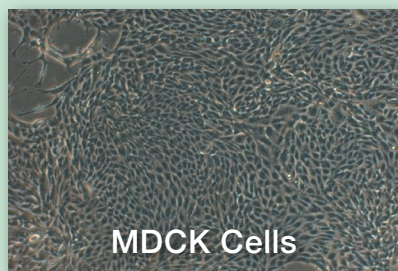
\* The duration necessary to detach cells may vary by the type of cells and other factors. Use the minimum duration to avoid the damage to the cells by trypsin.



## s-TI

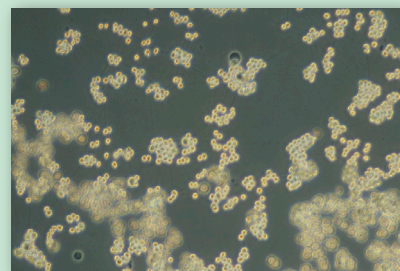
- Ready to use synthetic Trypsin Inhibitor solution.
- Use equal amounts of s-TI to neutralize r-TE.
- Validated by cell detachment test.

## Highly Effective Dissociation



MDCK Cells

Treated with r-TE  
(37°C 3-5 min.)



| Code (CSTI / NIPRO) | Product Name | Description                          | Storage temp. | Size      |
|---------------------|--------------|--------------------------------------|---------------|-----------|
| 1210 / 87-974       | r-TE         | Recombinant Trypsin / EDTA solution  | 2-8 °C        | 100mL (P) |
| 1220 / 87-975       | s-TI         | Synthetic Trypsin Inhibitor solution | 2-8 °C        | 100mL (P) |

(P) PET bottle

※This product is for research use only. It cannot be used for therapeutic or diagnostic purpose.



1-16-16 Seikaen, Aoba-ku, Sendai,  
982-0262, Japan  
URL: <http://www.cstimedia.com>  
E-mail: [csti-info@ml.nipro.co.jp](mailto:csti-info@ml.nipro.co.jp)



**NIPRO CORPORATION**  
3-26, Senriokashinmachi, Settsu,  
Osaka, 566-8510, Japan